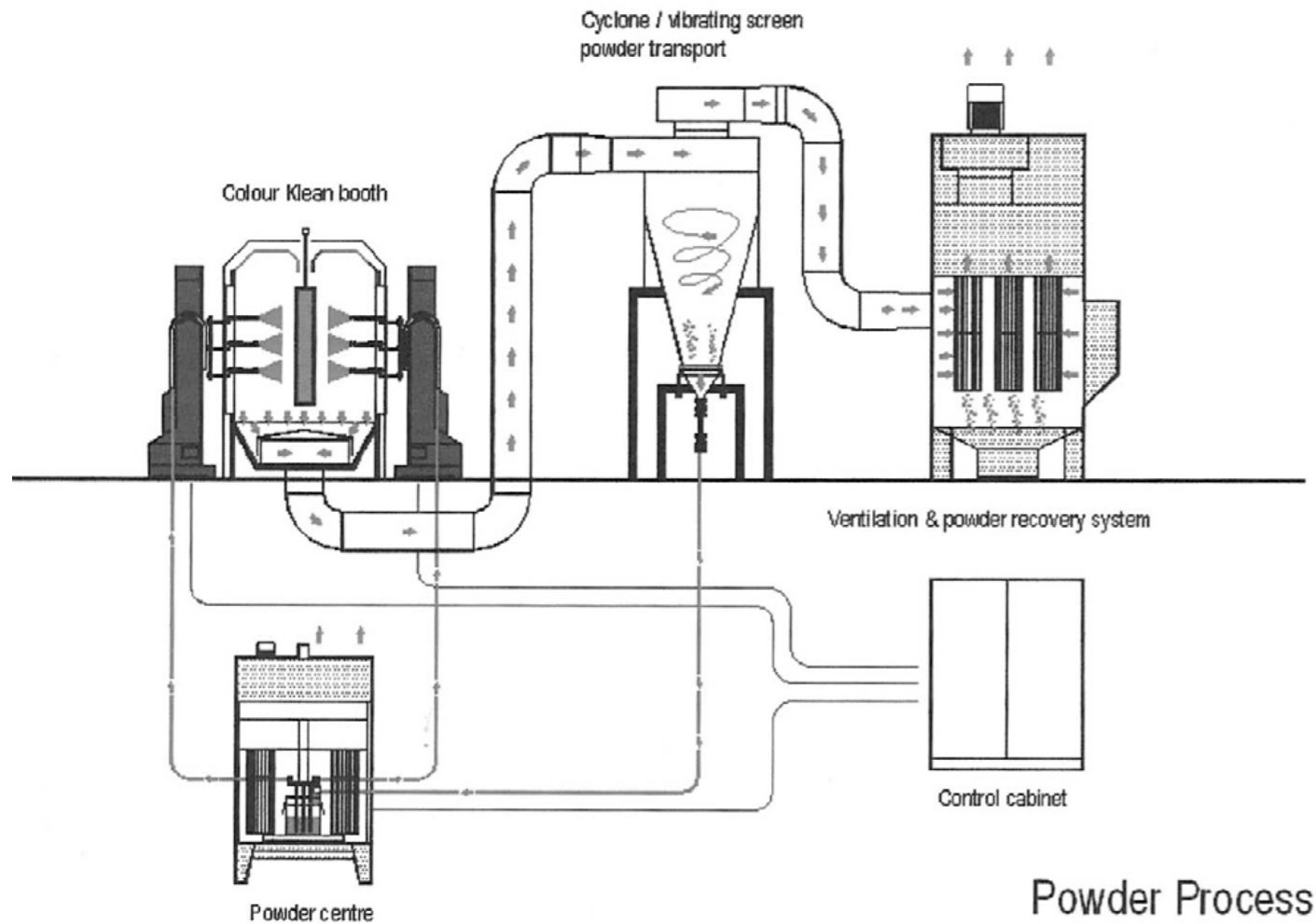
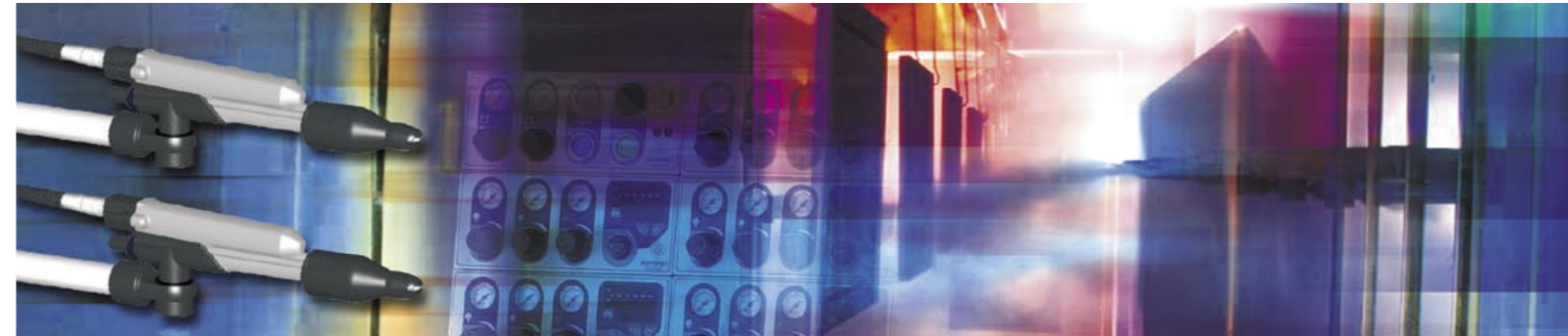


400 Series / ColourKlean

Fully automatic electrostatic powder coating solution



Powder Process

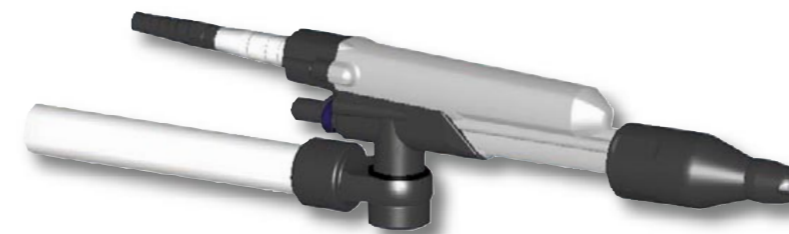


The Eurotec 400 Series automatic powder coating application system complete with TOTAL ENERGY CONTROL (patented) gives unrivalled control with good penetration of the powder into difficult areas and smooth lay down to give a superior finish.

The system applies all types of thermo-setting powders efficiently and onto all types of parts, with high efficiency good first time deposition and minimal overspray.

The straight through powder path, quarter turn nozzle assembly and quick release powder connectors, aid quick and easy clean down, for efficient colour changes without contamination.

The easy to use 400 Series gun controller allows the operator to see at a glance all the settings on the guns and to make adjustments as necessary.



EUROTEC FINISHING SYSTEMS LIMITED
 Unit 4, Lockflight Buildings Wheatlea Industrial Estate
 Wigan Lancashire WN3 6XR - UK
 Ph: 01942-829111 Fax: 01942-820491
 e-mail: enquiries@eurotecfishing.com

www.eurotecfishing.com



THE AG 400 APPLICATOR



The 400 series automatic gun comes complete with two types of slotted nozzle. Other types of nozzle assemblies are available: 3 sizes of spreader and 200, 300, 600, and 900mm lengths of extension.

The AG400 gun is mounted onto a support bar and then on either a Eurotec ER4S Reciprocator or The ES4 Swinger gun movers.



ER4S Reciprocator

The Er4s reciprocator is electro-mechanical and is available in three standard stroke lengths; 1.5, 2.0 and 2.5m. The controls are easy to use and mounted direct onto the unit, it also come complete with energy chains for tidy installation of all the cables and hoses.

400 SERIES GUN CONTROLLER



The 400 series gun controller has all the pneumatic and electrical controls for one AG400 powder applicator. The controls are easy to use with three air regulators for the regulation of compressed air for the venture pumps and a separate air supply direct to the front of the gun to keep the face of the powder spreaders clear.

The electrical controls are for the selection of either TEC 1 or TEC 2 up and down buttons for Kv and μ A setting. The face of the unit also has LED bar display to show both Kv and μ A outputs at the front of the powder gun.

Safety

The 400 Series equipment complies with the following approvals.

EN50050/2001
CE, ATEX and FM

TECHNICAL DATA

Pneumatics
Input air pressure 7.0 Bar max
Oil free to 0.1 p.p.m. and dry to 1.3g/m₃
Air consumption 10 m³/hr

Electrics
Single phase
Input voltage 100 – 260V, 50/60 Hz
Power consumption 45VA
Electrostatic output voltage 85kV max.
Electrostatic output current
Mode 1, 50 μ A Mode 2, 100 μ A



COLOURKLEAN BOOTH SYSTEM

The ColourKlean booth is designed as a quick colour change system.

The booth is manufactured from double skinned PVC with 'honeycomb' between the skins. This system keeps the attraction of the powder to the booth walls to a minimum, and when cleaned the powder is easily removed.

The system also has a cyclone complete with integral sieve, extraction filter and a colour centre.

The cyclone recovers the usable over sprayed powder and after sieving returns the powder to the gun feed container in the powder centre.

The powder centre feeds the powder to the powder applicators in the booth. During the clean down cycle the centre automatically purges the internal of the powder hoses and venturies whilst the external areas can be cleaned by the operator. This is possible as the powder centre has an extraction system.

