



Eurotec Finishing Systems Limited

Unit 4 Lockflight Buildings, Wheatlea Industrial Estate,
Wigan WN3 6XR

Phone: 01942 829 111 Fax: 01942 820 491

<http://www.eurotecfinishing.com> e-mail : enquiries@eurotecfinishing.com

V55T VENTURI

INSTRUCTION MANUAL

DOCUMENT:	V55T Venturi - Manual
DATE ISSUED:	22 June, 1999
ISSUE NUMBER:	1

CAUTION

This equipment can be dangerous unless it is used in accordance with the rules laid down in this manual.

Read this manual completely before installing and operating the equipment.

Ensure all safety instructions and procedures are correctly followed and that all operators are fully trained.

IMPORTANT: All other manuals relevant to components and equipment of the installation must be followed.

CONTENTS

- 1. Title**
- 2. Caution**
- 3. Contents**
- 4. V55T Venturi**
 - *Description*
 - *Performance*
 - *Operation*
 - *Mounting*
 - *Setting Up*
 - *Changing Colour*
 - *Cleaning*
 - *Maintenance*
- 5. V55T Venturi Assembly Drawing**
- 6. Parts Lists**
 - *Venturi Assembly & Mounting Kit options*

Changing Colour

In order to prevent contamination of the product from a previous colour, it is essential to remove all traces of the previously sprayed powder from the application equipment. i.e.. Powder container, suction tubes, Venturies, Powder hoses and Spray guns. Also any other surfaces where powder may become dislodged and cause contamination of the product or new powder. If the powder is to be reclaimed, then the spray booth, ductwork and recovery equipment must also be thoroughly cleaned.

<u>IMPORTANT</u>	WHENEVER COMPRESSED AIR IS USED FOR CLEANING EQUIPMENT. THIS OPERATION MUST BE CARRIED OUT IN AN EXTRACTED SPRAYBOOTH.
-------------------------	--

Cleaning the Venturi

With the spray booth extraction running, remove the venturies from their mounting clips, and with the electrostatic switches in the OFF position, trigger the Gun Control Units to purge the venturies , powder hose and spray guns. This will remove much of the loose powder. Turn Off the Gun Control Units.

Alternatively, for Eurotec GCU (A) type Gun Control Units (Automatic Guns), the switched air outlet may be connected to the dilution air line outside the unit, and then operation of the front panel air switch will also purge the venturi, powder hose and spray gun with out the need to remove the venturi.

Detach the airlines and powder hose from the venturies and using CLEAN, DRY compressed air from a blow down gun, place fingers over the ends of the air fittings and blow into the induction hole to clean the suction chamber.

Remove the powder tail and insert and clean them.

Clean the venturi block internally and externally and refit the powder tail and insert.

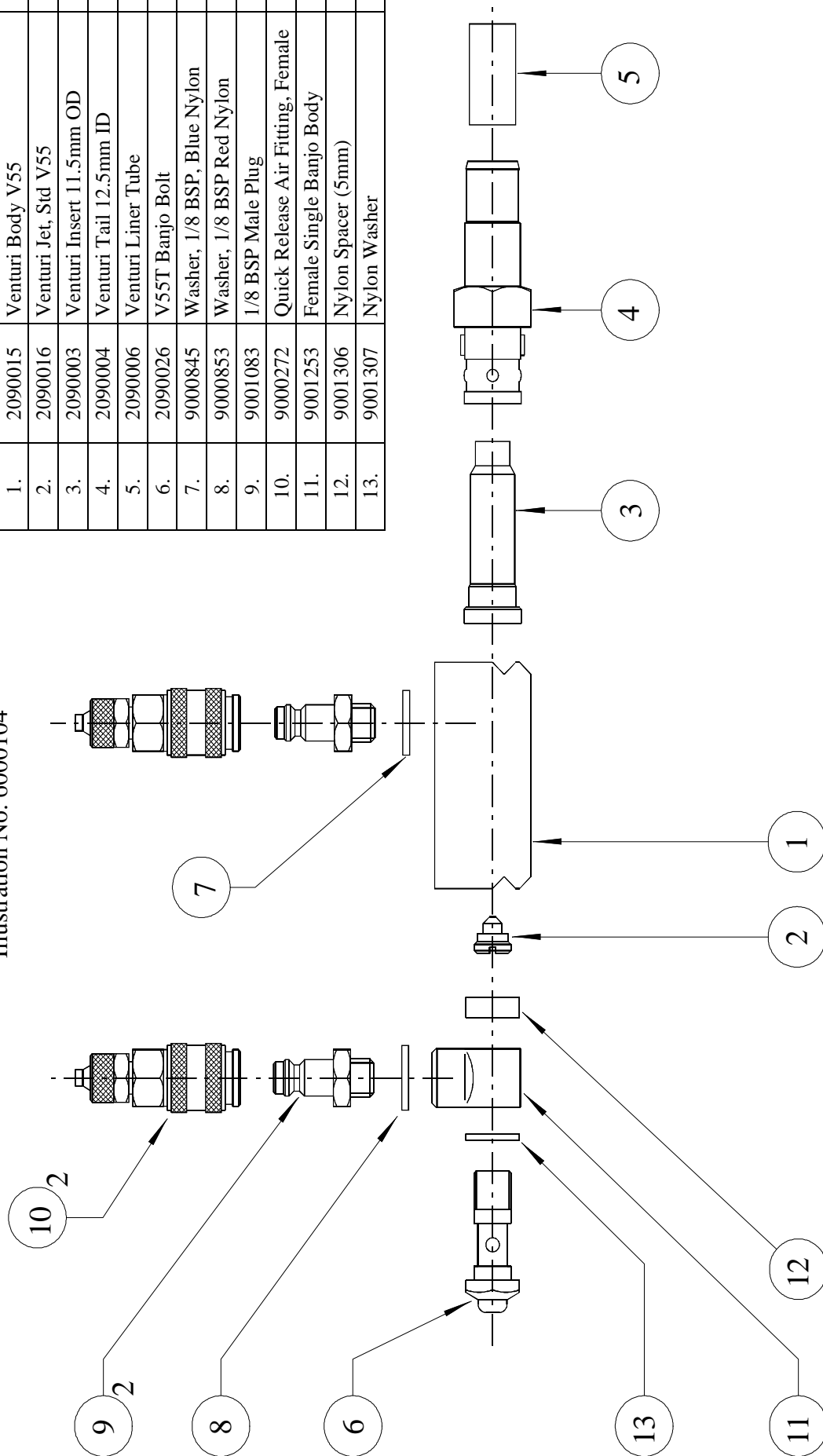
Maintenance

The internal insert is produced from PTFE in order to prevent powder impaction and will therefore require replacement from time to time due to the abrasive nature of paint powder. The insert is easily accessed and replaced by removal of the powder hose tail.

It is important that the venturi body is retained securely by the mounting clip in order to prevent air leakage from the lift tube seal. To restore a "snug" fit the spring legs of the mounting clip may carefully be bent inwards using pliers. Excessive bending will damage the clip.

V55T/Q VENTURI Assembly Drawing
Part No. 2090027
 Illustration No. 6000104

Item	Part No.	Description	Qty
1.	2090015	Venturi Body V55	1
2.	2090016	Venturi Jet, Std V55	1
3.	2090003	Venturi Insert 11.5mm OD	1
4.	2090004	Venturi Tail 12.5mm ID	1
5.	2090006	Venturi Liner Tube	1
6.	2090026	V55T Banjo Bolt	1
7.	9000845	Washer, 1/8 BSP, Blue Nylon	1
8.	9000853	Washer, 1/8 BSP Red Nylon	1
9.	9001083	1/8 BSP Male Plug	2
10.	9000272	Quick Release Air Fitting, Female	2
11.	9001253	Female Single Banjo Body	1
12.	9001306	Nylon Spacer (5mm)	1
13.	9001307	Nylon Washer	1



* The following parts lists may vary slightly due to individual customer orders



**VENTURI ASSEMBLY
C50H MANUAL F/B (50L) QD AIRLINES
(Part No. 2090027 & 2090031)**

Venturi Assembly Type V55T/Q (Part No. 2090027)

Item	Part No.	Description
1	2090006	Venturi LinerTube
2	2090004	Venturi Tail
3	2090003	Venturi Insert
4	2090015	Venturi Body
5	9001083	Male Plug
6	9000854	Blue Washer
7	9000272	Quick Release Fitting
8	2090026	Banjo Bolt V55T
8A	9000855	Washer, 1/8 BSP Nylon
8B	9001306	Spacer, 1/8 BSP Nylon
9	2090016	Venturi Jet
10	2090853	Red Washer
11	9001253	Banjo Body

Venturi Mounting Kit - Manual (Part No. 2090031)

Item	Part No.	Description
12	5000010	Venturi Seal
13	5000026	Venturi Spigot
14	2090025	Venturi Mounting Clip V55T
15	5000009	Nut
16	2090022	Lift Tube, Manual

* The following parts lists may vary slightly due to individual customer orders



**VENTURI ASSEMBLY
AUTO F/B (100-200L) - 6mm AIRLINES
(Part No. 2090028 & 2090030)**

Venturi Assembly Type V55T/6 (Part No. 2090028)

Item	Part No.	Description
1	2090006	Venturi Liner Tube
2	2090004	Venturi Tail
3	2090003	Venturi Insert
4	2090015	Venturi Body
5	9001045	Straight Connector 6mm
6	9000854	Blue Washer
7		
8	2090026	Banjo Bolt, V55T
8A	9000855	Washer, 1/8 BSP Nylon
8B	9001306	Spacer, 1/8 BSP Nylon
9	2090016	Venturi Jet
10	9000853	Red Washer
11	9001253	Banjo Body

Venturi Mounting Kit - Auto F/B (Part No. 2090030)

Item	Part No.	Description
12	5000010	Venturi Seal
13	5000026	Venturi Spigot
14	2090025	Venturi Mounting Clip V55T
15	5000009	Nut
16	2090020	Lift Tube Auto

* The following parts lists may vary slightly due to individual customer orders



**VENTURI ASSEMBLY
 AUTO F/B (100-200L) - 8mm AIRLINES
 (Part No. 2090029 & 2090030)**

Venturi Assembly Type V55T/8 (Part No 2090029)

Item	Part No.	Description
1	2090006	Venturi Liner Tube
2	2090004	Venturi Tail
3	2090003	Venturi Insert
4	2090015	Venturi Body
5	9001095	Straight Connector 8mm
6	9000854	Blue Washer
7		
8	2090026	Banjo Bolt, V55T
8A	9000855	Washer, 1/8 BSP Nylon
8B	9001306	Spacer, 1/8 BSP Nylon
9	2090016	Venturi Jet
10	9000853	Red Washer
11	9001253	Banjo Body

Venturi Mounting Kit - Auto F/B (Part No 2090030)

Item	Part No.	Description
12	5000010	Venturi Seal
13	5000026	Venturi Spigot
14	2090025	Venturi Mounting Clip
15	5000009	Nut
16	2090020	Lift Tube Auto

* The following parts lists may vary slightly due to individual customer orders



**VENTURI ASSEMBLY
C50D BOXFEED - QD AIRLINES
(Part No. 2090027 & 2090032)**

Venturi Assembly Type V55T/Q (Part No 2090027)

Item	Part No.	Description
1	2090006	Venturi Liner Tube
2	2090004	Venturi Tail
3	2090003	Venturi Insert
4	2090015	Venturi Body
5	9001083	Male Plug
6	9000854	Blue Washer
7	9000272	Quick Release Fitting
8	2090026	Banjo Body, V55T
8A	9000855	Washer, 1/8 BSP Nylon
8B	9001306	Spacer, 1/8 BSP Nylon
9	2090016	Venturi Jet
10	9000853	Red Washer
11	9001253	Banjo Body

Venturi Mounting Kit - Boxfeed (Part No 2090032)

Item	Part No.	Description
12	5000010	Venturi Seal
13	5000026	Venturi Spigot
14	2090025	Venturi Mounting Clip
15	5003029	Venturi Bush
16	2070026	Fluidising Suction Tube Assembly
	(or 2090020)	Lift Tube Auto - (Non Fluidising)

* The following parts lists may vary slightly due to individual customer orders

VENTURI ASSEMBLY (V55T/Q) & AUTO FLUID BED MOUNTING KIT

Venturi Assembly Type V55T/Q (Part No 2090027)

Item	Part No.	Description
1	2090006	Venturi Liner Tube
2	2090004	Venturi Tail
3	2090003	Venturi Insert
4	2090015	Venturi Body
5	9001083	Male Plug
6	9000854	Blue Washer
7	9000272	Quick Release Fitting
8	2090026	Banjo Body, V55T
8A	9000855	Washer, 1/8 BSP Nylon
8B	9001306	Spacer, 1/8 BSP Nylon
9	2090016	Venturi Jet
10	9000853	Red Washer
11	9001253	Banjo Body

Venturi Mounting Kit - Auto F/B (Part No 2090030)

Item	Part No.	Description
12	5000010	Venturi Seal
13	5000026	Venturi Spigot
14	2090025	Venturi Mounting Clip
15	5000009	Nut
16	2090020	Lift Tube Auto

NOTES:

